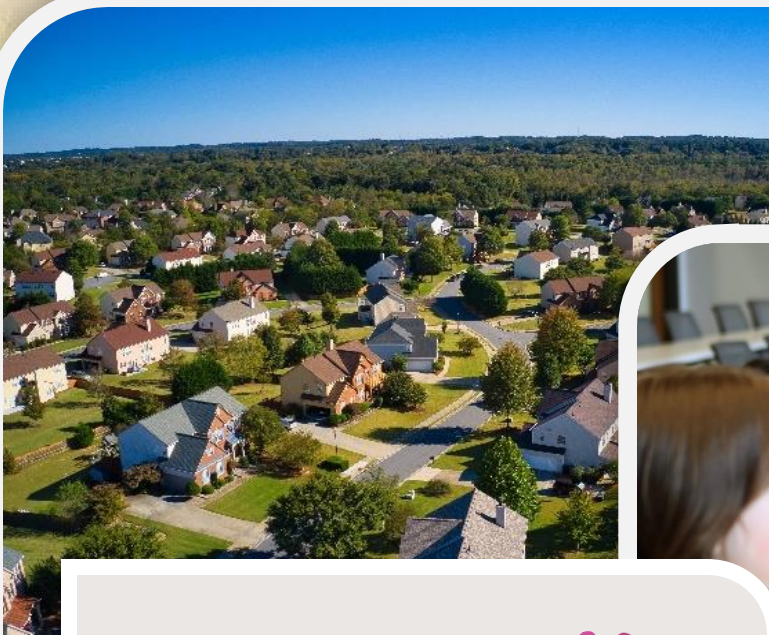


Community **IMPACT** Statement



Year In Review
2023-2024 Fiscal Year



**WOODBURY
COMMUNITY
FOUNDATION**





Connecting You to causes that Matter





TABLE OF CONTENTS

Community Impact Statement

2023-2024 Fiscal Year

- Letter from the Chair
- Who We Are
- Executive Committee
- Sponsors, Board & Staff
- Year In Review
- Field of Interest Fund & Heart Of Woodbury Endowment
- Donor-Advised Fund Impact Story
- Woodbury News Net Impact Story
- Community Impact Programs
- Financials
- Spotlight On C-suite Implementation
- Thank You
- Join Us!



Youth Engagement
Leadership Academy



ONE Woodbury Event



Citizens Academy



Woodbury Days



LETTER FROM THE CHAIR

“ *You can be assured that your investment in Woodbury’s future is protected at the Woodbury Community Foundation.”*



Matthew Johnson
BOARD CHAIR

HELLO NEIGHBORS,

It has been an amazing year of updates and upgrades at the WCF. We have fine-tuned our giving software and donor hub, improving the donor and fund advisor experience.

Our board has worked hard creating and solidifying the philanthropic tools for the community to use including Agency Funds, Donor Advised Funds, Field of Interest Funds, and many more.

Our board of directors has taken action to establish field of interest funds in areas that we believe are imperative to building a stronger Woodbury. This includes Arts & Culture, Health & Human Services, The Environment, and Community Grants!

As we look further down the road to the future of our great community, our new Heart of Woodbury Endowment fund will be the backbone to continuing this work in perpetuity.

We know that strong communities have a strong Community Foundation. Donors don’t always necessarily give “to us” but have an awesome opportunity to give “through us” in supporting causes that matter.

We look forward to continuing our work with you to support the causes you are passionate about. You can be assured that your investment in Woodbury’s future is protected at the Woodbury Community Foundation.

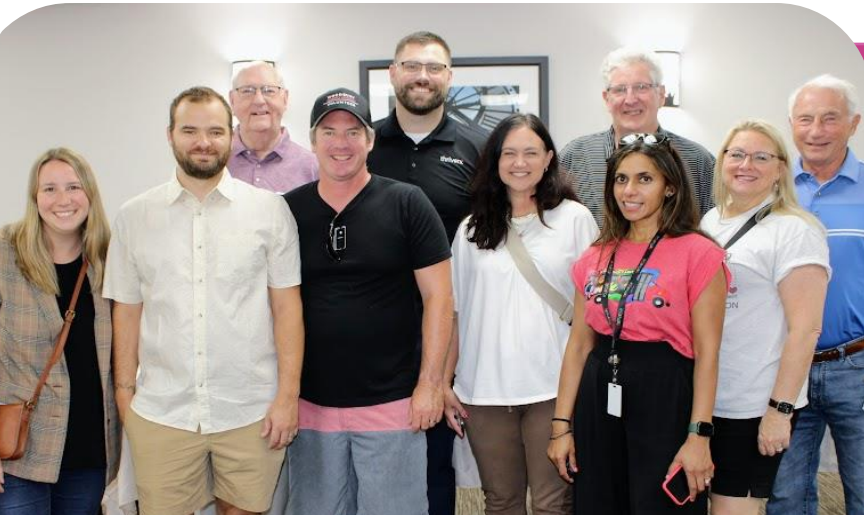
With gratitude,

Matthew Johnson
BOARD CHAIR





WHO WE ARE



WCF Champions, Members of Our Volunteer Network

THE WCF

The Woodbury Community Foundation (WCF) is a 501(c)(3) charitable organization that assures that our city is a premier and caring place to live and work for all. We inspire collaboration by connecting individuals and businesses with causes that matter, making a real impact within our community and producing real, measurable results.

OUR MISSION

Our mission is to strengthen our community by connecting people and organizations with causes that matter.

OUR VISION

Our vision is to ensure our community is a premier and caring place to live, work and play.

OUR GREATEST INSPIRATION

The inspired determination of our board members, donors, volunteers, and partners working through innovative collaborations fuels our goal, **to promote a thriving community and improve the quality of life for all who call Woodbury, Minnesota home.**

OVER 21 YEARS
OF COMMUNITY
IMPACT

OUR STORY

The Beginnings of the
WOODBURY COMMUNITY FOUNDATION

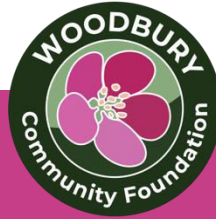


The Woodbury Community Foundation had its beginnings in 2003 as "Friends of Woodbury" when a group of seven concerned citizens took on the task of raising funds to purchase a piano for the City's new Central Park. The money was raised, and the equipment was purchased in 2004. During this process, a number of other needs and issues within the community were identified. This resulted in the vision of the group being expanded to include the establishment of a community-focused nonprofit foundation.

WOODBURY
COMMUNITY
FOUNDATION



EXECUTIVE COMMITTEE



WOODBURY COMMUNITY FOUNDATION 2023-2024 EXECUTIVE COMMITTEE



Matthew Johnson
Board Chair



Christie Denson
Incoming Chair



Jim Stevenson
Treasurer



Jacques Peulen
Secretary



Jack Clinton
Director



Manali Shah
Director



Cindy Shanley
Director



Community Academy 2024



SPONSORS

- Alma Flor Ada
- Angels of Hope
- Anew Real Estate Group
- Ballast Advisors
- Bash for Brains
- Blaze Credit Union
- Bridgemans
- Christie Denson Communications
- City & County Credit Union
- Dorothy Anne Bakery
- Edward Jones, Eric Rislove
- Fury Motors
- Goddard School
- Goerlitz Law, LLC
- Hellmuth & Johnson
- Image 360
- Legacy Wealth
- Live Brave 5K
- Metro Gravel
- M Health Fairview
- Midwest Minds
- MGM Liquors
- Olsen Real Estate Group
- Phil Thompson
- Serenity Dental
- Tradition Wealth
- Tom Dunn Photo

OFFICE & SUPPORT STAFF

- Norma Lanners, *Administrative Assistant*
- Roberto Munoz, *Bookkeeping/Data Systems Coordinator*
- Simi Patniak, *Woodbury Thrives Coordinator*

BOARD OF DIRECTORS

- Elizabeth Allen
- Kimberly Alwin
- Anne Burt
- Jack Clinton
- Kathy Carlson
- Lucilla Davila
- Christie Denson, *Incoming Chair*
- Matt Johnson, *Board Chair*
- Jacques Peulen, *Secretary*
- Manali Shah
- Cindy Shanley
- Jim Stevenson, *Treasurer*
- Margaret Wachholz
- Surraane Fufa
- Megan Lester
- Erich Mische
- Ross Hillukka
- Noah Wahlquist
- Noah Yehalashet





“OUR PROGRAMS ARE CULTIVATING A CULTURE OF GENEROSITY THAT BRIDGES GENERATIONS.”

“This year, the Woodbury Community Foundation proudly piloted a Legacy Giving program in collaboration with Apex Legacy Consultants. Through this initiative, we secured over \$5.7 million in bequest and estate plan commitments, not only to strengthen the Foundation but also to amplify giving to other local charities.

WCF continues to serve as a vital connector for nonprofits and the faith community, fostering partnerships that drive collective growth and impact. Our Non-Profit Roundtable, an essential collaboration with the City and 40 nonprofit organizations, has expanded its reach with the launch of an online directory and events calendar to empower and unite our nonprofit community.”



Christie Denson
FY 2025
BOARD CHAIR

\$5.7M+

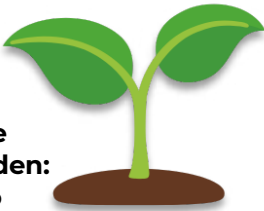
in legacy gift commitments
secured for future impact

\$185,275

Distributed to support Woodbury causes

3X

the size of the
Community Garden:
expanding to



96 Plots

by 2025



132 lbs

of fresh produce donated to
Open Cupboard from the
Community Garden.



50

FLU VACCINES
provided at Thrives Clinic

1,300



WINTER CLOTHING ITEMS

DONATED
ACROSS

14

COLLECTION SITES



400+

LOCAL FAMILIES

Served with meals, hygiene
kits, bike helmets, backpacks,
and school supplies.

30

FUNDS MANAGED

including donor-advised,
donor-designated, agency,
fiscal sponsor, and field of
interest funds.

7,500+



VOLUNTEER HOURS

Contributed to the Woodbury community

19

COMMUNITY SERVICE EVENTS HOSTED

60

COMMUNITY LEADERS Trained to strengthen local impact



FIELD OF INTEREST FUND & HEART OF WOODBURY ENDOWMENT

WCF Grants Program



3 NEW Funds!

INVESTING IN TOMORROW

In order to begin investing in areas that we believe contribute to a vibrant and well-rounded community, the Woodbury Community Foundation board initiated three field of interest funds for our residents to begin supporting. This allows donors to focus their charitable giving on a specific area of interest, while still benefiting from the expertise of the foundation in identifying the most impactful organizations within that area. This provides flexibility to adapt to changing community needs over time, and ensure their donation is strategically distributed across relevant causes without needing to choose a single organization upfront.

WOODBURY ARTS & CULTURE FUND

The Woodbury Arts & Culture Fund was created to foster a vibrant and thriving arts and cultural scene in Woodbury, enriching the lives of residents and visitors alike. This fund supports the development and promotion of artistic expression, cultural heritage, and creative experiences within our community.

WOODBURY HEALTH & HUMAN SERVICES FUND

The Woodbury Health & Human Services Fund provides essential support to individuals and families in need, ensuring access to vital resources and services that promote well-being and build a stronger, more equitable community. We envision a Woodbury where everyone has the opportunity to live a healthy, fulfilling, and dignified life.

WOODBURY ENVIRONMENT FUND

The Woodbury Environmental Preservation Fund (WEPF) is dedicated to preserving and enhancing the natural beauty and environmental integrity of Woodbury for current and future generations. We believe that a healthy environment is essential for the well-being of our community and strive to safeguard the unique natural resources that define our city.

Together, we can build a stronger Woodbury. Donate & view causes by scanning the QR code below or visiting our website.





DONOR-ADVISED FUND IMPACT STORY

“The tax advantage of the Donor Advised Fund (DAF) was key, and we knew we’d be donating anyway. We love knowing that our dollars will be used locally, and that we get a say in how that happens.”

WOODBURY MAYOR ANNE BURT USES A DONOR-ADVISED FUND (DAF) AS A FLEXIBLE WAY TO GIVE BACK

Woodbury Mayor Anne Burt and her husband, Jeff, are strong supporters of their community, using a donor-advised fund (DAF) to make a local impact. DAFs allow donors to contribute assets like stock to a charity and receive immediate tax benefits while keeping control over how the funds are allocated. The Burts appreciate how this flexible giving tool helps them support causes in Woodbury, such as the Angels of Hope Fund and the Public Safety Fund.

Through their DAF, the Burts have been able to direct donations to various local initiatives, from supporting Alzheimer's research to assisting first responders with community needs. They value the ability to make quick, impactful contributions while knowing their funds are helping locally.



Anne Burt, Woodbury Mayor

Burt encourages others to explore DAFs as a way to make a difference, noting that Woodbury's growth as a community makes it a prime example of how local residents can contribute.

The Woodbury Community Foundation (WCF) acts as the administrative hub, helping people like the Burts support initiatives that align with their values and priorities. For more details, [visit the full story here](#).

Read the full story by
scanning the QR
code or visiting our
website





WOODBURY NEWS NET IMPACT STORY

Woodbury News Net

Strengthening the Bonds of Community. One story at a time.

Home - News - City & County - Schools - Business - Life - Election 2024

Top Story



Food Pantry Adds Another Store As Demand Skyrockets

Subscribe for FREE

The Roundabout

The Newsletter of Woodbury News Net

Enter your email

Subscribe

Welcome to Woodbury News Net

Picture a community where everyone is informed, engaged and connected - a place where facts matter and reliable information is at your fingertips.

This is the vision of our nonprofit, local, community-led, online, independent news initiative: Woodbury News Net.

WNN Website Homepage (Left)
and Supportive Yard Sign (Right)



CONNECTING THE COMMUNITY AND HELPING DELIVER LOCAL NEWS

In early 2024 a group of passionate citizens got together to form Woodbury News Net (WNN). The effort was spearheaded by two former state senators from Woodbury: Kathy Saltzman and Susan Kent. The premise was simple: Woodbury needed a news source that was hyperlocal, nonpartisan and reported factual news.

Soon work was underway to form a non-profit organization, recruit initial donors and identify an editorial team that would connect the community, one story at a time.

The Woodbury Community Foundation, a recognized and respected organization in the community, was the best choice to be WNN's fiscal sponsor.

Donations made to the Woodbury News Net Fund, through WCF, would provide donors the ability to make tax deductible donations to fund critical start-up needs and keep philanthropic dollars local.

WNN launched its online newsletter in August. The weekly publication soon climbed from initial 100 plus subscribers to over 2,300 and counting. Donations for the non-profit are seamlessly processed by the WCF. It is a true partnership, where both organizations support each other's goals to support the community.

[Read the full story here.](#)

WOODBURY NEWS NET'S Advisory Board

*Paul Huffman, Susan Kent,
Pat Mack, Rich Radke,
Kathy Saltzman and
Manali Shah*

JOIN OUR COMMUNITY OF INFORMED READERS!

Subscribe to the Woodbury News Net newsletter for the latest news and insights. Scan the QR code or visit our website to sign up



Visit us online to read more independent, local news

<https://www.woodburyfoundation.org/woodbury-news-net-fund>



COMMUNITY IMPACT PROGRAMS



Pranavi Vedere, YELA Student & Scholarship Recipient

“The biggest impact the YELA program had on me was community.

Due to YELA, I got involved in a lot of different connections, programs & participated as a volunteer, like OneWoodbury. Now I see familiar faces around Woodbury. Being involved in the community is a priority on my list.

- Pranavi Vedere



ROUNDS FORE REBS RAISES FUNDS FOR SCHOLARSHIPS

Pranavi participated in the Woodbury Community Foundation’s Youth Engagement Leadership Academy (YELA), gaining a deep understanding of community operations and forming valuable connections.

“Without exposure like that, you don’t know what is behind the scenes in the Woodbury community,” she says.

In memory of former Woodbury City Council member Paul Rebholz, his family and the WCF established the Rounds Fore Rebs, an annual golf tournament that raises funds for YELA. The proceeds fund scholarships for the best essays on community citizenship.

The WCF helped Pranavi recognize her writing talent, boosting her confidence and leading her to prioritize community involvement. She earned a \$1,000 scholarship and continues to engage actively in the community. For more details, [visit the full story here](#).

CURRENT COMMUNITY PROGRAMS

Join us in our mission to build a brighter future for Woodbury!

Get involved, support our charitable initiatives, and help us make a positive impact in our community today.

We run six community programs:

- Community Academy
- Non-Profit Roundtable
- Youth Engagement Leadership Academy (YELA)
- Woodbury Racial Equity Collaborative
- Woodbury Thrives
- Woodbury Champions

Visit our website for a comprehensive list of ALL of our local causes, volunteering opportunities, and ways to contribute.

www.woodburyfoundation.org/how-to-get-involved





The Woodbury Community Foundation is growing, and it's really bringing a different lens to innovation, taking a different way of looking at things. These are exciting times! As society evolves, we're evolving, too. I see the development that's happened, **and I'm glad to see that as we grow as a city, this incredible organization is growing, too.** I'm looking forward to continuing to be involved as long as I can. Anytime I can help and support, I'm there!

Lucilla Davila
Owner of Alma Flor
Ada Spanish
Immersion School



\$600K

Total Funds Raised
in 2023 - 2024

\$185K

Community Reinvestment
in 2023 - 2024

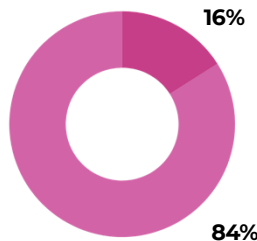
127

Foundation and Partner
Grants in 2023-2024

BENEFITING WOODBURY THROUGH MANAGED FUNDS

Empowering
Woodbury's Future with
Managed Resources

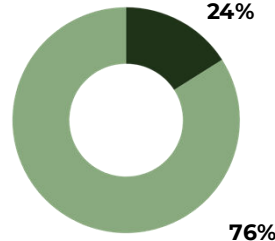
TOTAL ASSETS



Total: \$1,245,208

Restricted: \$1,045,529
Unrestricted: \$199,679

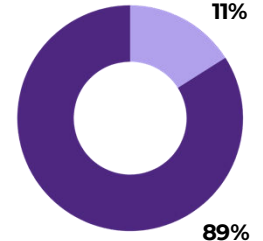
TOTAL FUNDS RAISED



Total: \$600,481

Restricted: \$144,576
Unrestricted: \$455,905

TOTAL GRANTS



Total: \$185,275

WCF Grants: \$20,000
Restricted Fund Partner
Grants: \$165,275

Notes & Key

- Overall expenses for 2023-2024 was \$127,101.89
- Restricted Funds (Community Partner Funds)
- Unrestricted Funds (Donations & Sponsors)



SPOTLIGHT ON C-SUITE IMPLEMENTATION

NEW SOFTWARE

One system to manage donor information, grant applications, reporting, and financial details

This year, we finalized the implementation of new software that will help carry our foundation into the next phase of growth.

Community Suite (C-Suite) provides a single system to manage all donor information, grant applications, reporting, and financial details, eliminating data silos and improving accessibility for our donors and staff.

Implementing this software has significantly improved our foundation's efficiency by streamlining grantmaking processes, enhancing donor engagement, providing better data analysis capabilities, and allowing for more effective management of complex fund structures, ultimately maximizing our impact on the community by optimizing our time and resources.

"...foundation management software to streamline and connect your operations"

Connect with our staff at the Woodbury Community Foundation to learn more about the new software and ask questions by calling our office or emailing us.

To learn more about the management system and the features it offers for our foundation, [visit the Foundant Technologies website for more information.](#)

Visit the Foundant Technologies website by scanning the QR code





THANK YOU THANK YOU THANK YOU THANK YOU THANK YOU THANK YOU



THANK YOU FOR YOUR SUPPORT

We appreciate each person, organization, business, and donor who helped create positive change in our Woodbury community this last year.

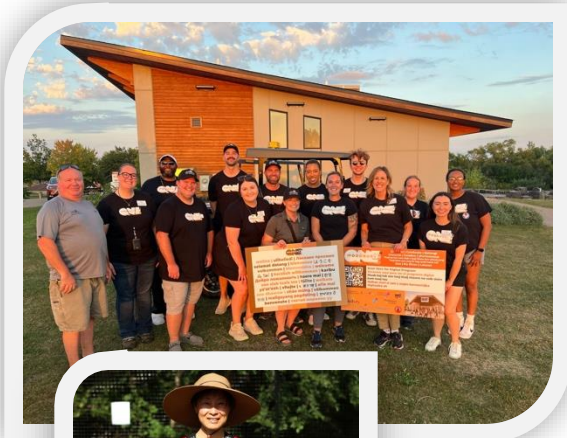
With your dedicated time and funding, many lives have been impacted for the better and new meaningful community programs created.

Thank you again for your dedication and we all look forward to the new opportunities 2025 has in store for our community.





HOW DO I DONATE OR JOIN
THE WOODBURY
COMMUNITY FOUNDATION?



We offer many ways to support **causes that matter to you** whether you're looking to give back with your time, your talent or your treasures.

Would you consider a donation to one of our growing programs?

A great starting point is to **become a Woodbury Community Foundation Champion.**

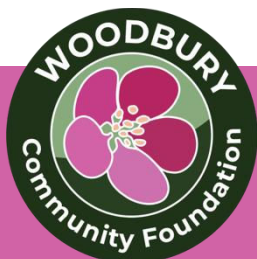
Champions are members of our volunteer network, are committed to giving back, and take part in community events like social meet-ups and happy hours to develop stronger relationships with our local non-profits and volunteers.

You can find more information on these items, current events, and so much more on our website.

DONATE TODAY.
START CHANGING LIVES TOMORROW.

Contact us to establish a fund in partnership with the Woodbury Community Foundation.

Together, we can build a stronger Woodbury. Donate & view causes by scanning the QR code below or visiting our website.



Connecting
You to causes that
Matter



651.505.7024



WoodburyFoundation.org



WCF@WoodburyFoundation.org

724 Bielenberg Drive, Woodbury, MN 55125